



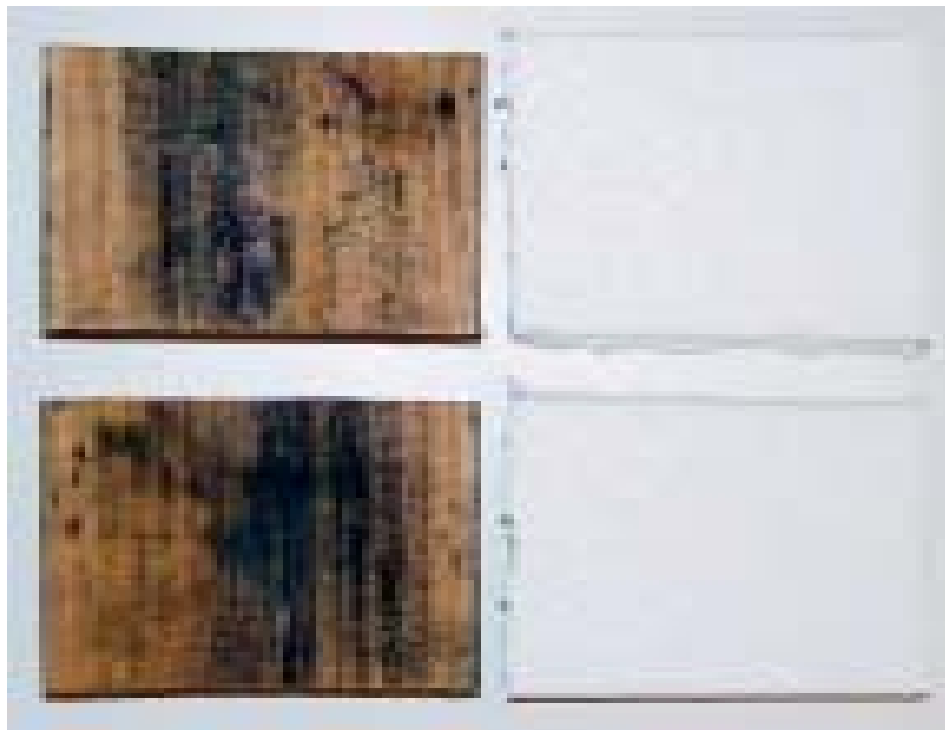
EPS No.1007

Subject: Foam-Control EPS - Testing for Mold Resistance

Date: January 2008

Foam-Control EPS was subjected to accelerated moisture/mold exposure testing to gauge its degree of mold resistance. Testing was based upon ASTM D3273-00, "Standard Test Method for Resistance to Growth of Mold on the Surface of Interior Coatings in an Environmental Chamber." This testing involves exposing the Foam-Control EPS to mold in an high humidity environment, approximately 90%

RH. In addition to the testing of Foam-Control EPS sample, samples of southern yellow pine were tested as a control. At the end of the 3 month test, the growth of mold (*Trichoderma* and *Aspergillus*) was obvious on the southern yellow pine. NO mold growth was present on the Foam-Control EPS. Please also refer to Technical Bulletin eps. no 1004.



**Southern Yellow Pine
with Mold Growth**

**Foam-Control EPS
with NO Mold Growth**



Foam-Control EPS products are manufactured by AFM Corporation licensees.

Copyright © 2015 AFM Corporation. All rights reserved. Printed in USA. Foam-Control and Control, Not Compromise are registered trademarks of AFM Corporation, Lakeville, MN.